

The Laramie County Conservation District has requested the same ½ mill levy tax from Laramie County voters since 1988. Although under Wyoming’s State Statute, Conservation Districts can request up to 1 full mill levy, the District strives to continue to request only a ½ mill and supplement that base local tax funding with state and federal grant dollars to sustain critical conservation programs. The District’s mill levy is currently worth \$735,000.00 and the District’s annual budget is nearly \$975,623.00.

The following calculates the annual conservation tax on a home worth \$219,070.00 (Average cost of a Single Family home in 2015).

Fair value of house/property	\$219,070.00
Level of assessment	<u>x .095</u>
Assessed valuation	\$20,811.65
1/2 mill	<u>x .0005</u>
Annual Conservation tax	\$ 10.41

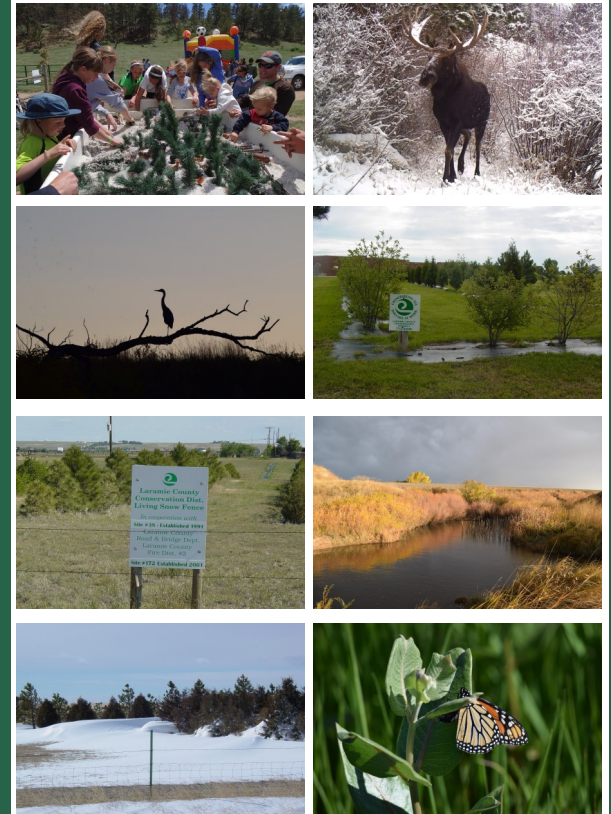
**\$0.87 cents per month...**

**That’s all it takes to continue supporting the important efforts of YOUR Conservation District.**



**Laramie County Conservation District**  
 11221 U.S. Hwy 30, Cheyenne, WY 82009  
 (307) 772-2600 fax (307) 772-2606  
 E-mail: [info@lccdnet.org](mailto:info@lccdnet.org)  
 Web site [www.lccdnet.org](http://www.lccdnet.org)

# 2016 REPORT TO VOTERS ON CONSERVATION IN LARAMIE COUNTY



**LARAMIE COUNTY  
 CONSERVATION  
 DISTRICT**

The Laramie County Conservation District's local mill levy funding question will be on the General Election ballot this November for **YOU** to decide if natural resource conservation should continue in Laramie County.

The District has several natural resource programs including:

### *LIVING SNOW FENCES-*

Living snow fences cost 1/3 less than traditional wooden structures, helping to keep roads clear of snow and ice while also providing wildlife habitat and adding beauty to the landscape of Laramie County.

- **265 living snow fences have been installed along city, county and state highways.**

### *SEEDLING TREES-*

Low cost seedling trees and shrubs enable landowners to establish larger conservation plantings. The District also provides a tree planting and fabric mulch installation service, as well as free technical assistance on tree planting designs, insect and disease problems of trees, and watering recommendations.

- **Currently over 1,200,000 trees have been sold and planted in Laramie County through this program.**

### *EDUCATION PROGRAM-*

The Laramie County Conservation District utilizes a variety of methods to inform the public on conservation issues and provide natural resource educational opportunities to Laramie County residents of all ages.

- **Provided natural resource education programs to nearly 45,000 people.**

### *SPECIAL PROJECTS*

The Community Enhancement Program annually funds projects proposed by County residents seeking to improve the environment and natural beauty of Laramie County.

- **Nearly 112 Community Enhancement Projects have been funded and installed.**
- **LCCD has also began managing the Cheyenne Business Parkway Natural Area with the goal of providing unique natural resource educational opportunities to residents of all ages while also preserving and enhancing the areas wildlife habitat value and water quality benefits.**

### **Laramie County Conservation District**



11221 US Highway 30  
Cheyenne, Wyoming 82009  
307-772-2600 • Fax 307-772-2606  
E-mail [info@lccdnet.org](mailto:info@lccdnet.org)  
Web site [www.lccdnet.org](http://www.lccdnet.org)

### *WATER QUALITY-*

The water program helps to maintain the quality and quantity of groundwater and surface water resources across Laramie County.

- **Addressed water quality impairments on Crow Creek both through town and within the headwaters.**
- **Worked with stakeholders and landowners to find ways to sustainably manage Laramie County's groundwater aquifers.**

### *RANGE-*

The District assists both small and large acreage landowners in developing grazing systems that address overgrazing issues, weed infestation, manure management, erosion control, and animal health.

- **Provided technical assistance to over 1,500 landowners to develop improved management practices.**
- **Provided over 500 grass seeding recommendations.**

### *WILDLIFE-*

The wildlife program provides opportunities to increase wildlife habitat in both rural and urban areas of Laramie County.

- **Over 40 guzzlers have been installed to store and trap precipitation that provides drinking water for wildlife.**
- **Implemented over 60 wildlife enhancement projects.**